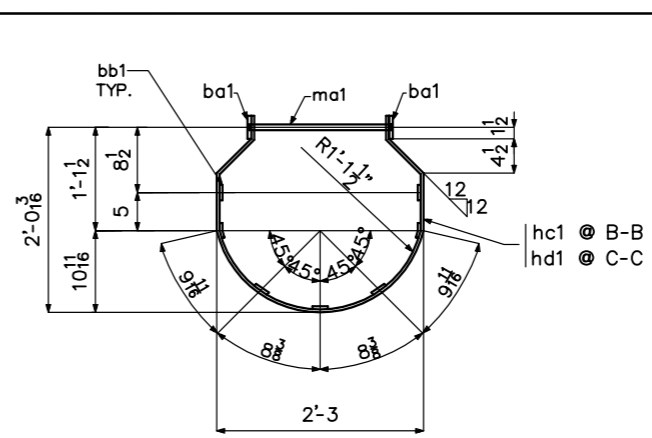
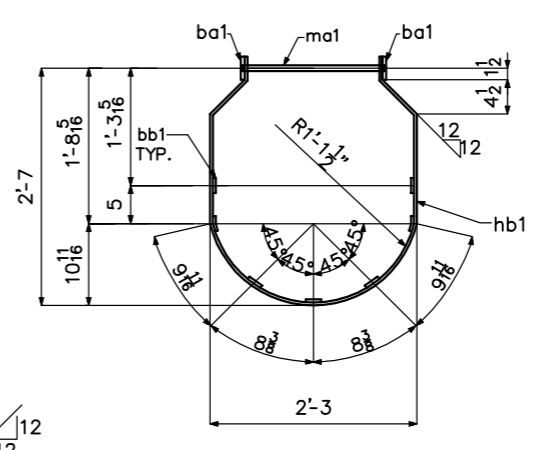


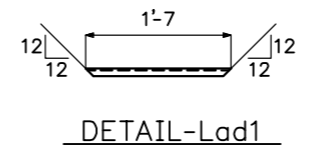
ONE-LADDER-1L1
(GALVANIZED)



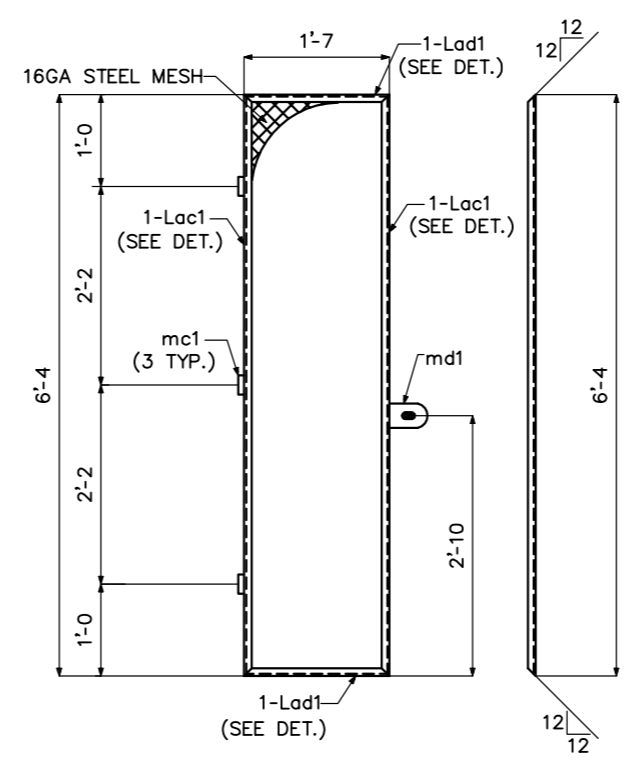
SECTION B-B
SECTION C-C



SECTION A-A

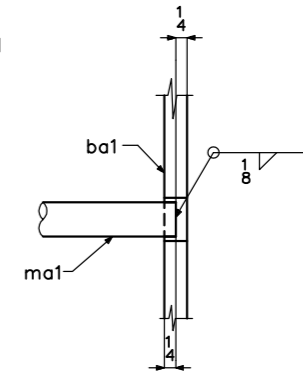


DETAIL-Lad1

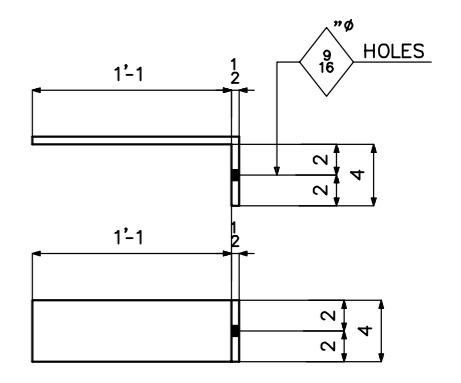


DETAIL-Lac1

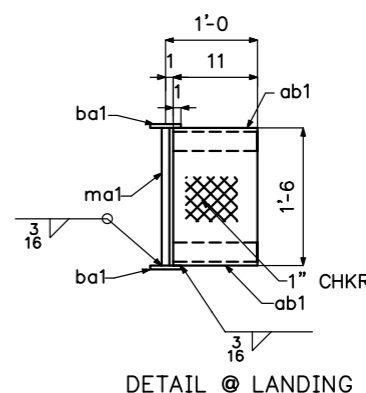
BILL OF MATERIAL										
QTY.	MARK	NO. PCS.	DESCRIPTION	LENGTH		FAB. MARK	MTL. A36 UN	ADV. BILL P/L	WEIGHT	NOTES
				FT.	IN.					
ONE	1L1		LADDER							GALV.
26			1" ROD	1	6 1/2	ma1			107.13	RUNGS
2			BAR 3X2	30	2	ba1			307.7	STRINGER
2			BAR 3X2	2	3 1/2	bc1			23.3	
2			BAR 3X2	2	0	bd1			20.4	
2			BAR 3X2	2	0 1/2	bf1			20.85	
7			BAR 4X6	22	8 1/2	bb1			270.22	BENT
6			2 1/2 X 4	1	5	ha1			57.85	BENT
1			BAR 4X8	7	0 1/2	hb1			35.9	BENT
4			BAR 2X8	5	10 1/8	hc1			60.24	BENT
1			BAR 4X8	5	10 1/8	hd1			30.12	BENT
2			L3X3X 1/4	0	3	aa1			2.45	
2			L3X3X 1/4	0	11	ab1			8.98	
1			CHECKER PLATE 1"X12"	1	6					
2			L1X1X 1/8	1	7	ad1			2.53	
2			L1X1X 1/8	6	4	ac1			10.13	
3			2 1/2 BUTT HINGE			mc1				
1			PADLOCK HASP			md1				
1			16GAX1-7" STEEL MESH	6	4					
									TOTAL WEIGHT = 158 LBS	



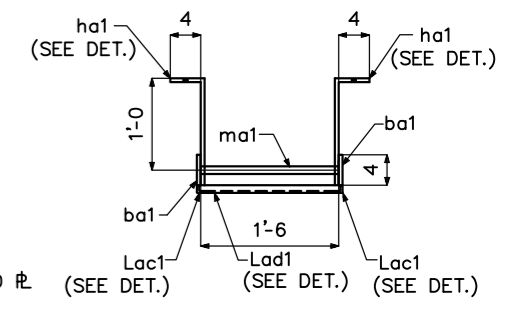
DETAIL-A



DETAIL-ha1



DETAIL @ LANDING



SECTION D-D

FOR APPROVAL 12-22-11

CLEANING: SSPC - SP3
 PAINT SPEC: 1/SC
 MATL: ASTM A36 UN / WELD: E70XX
 HOLES U.N.: SLOTS U.N.:
 NOTES:

TSC will detail and/or design connections not furnished on design drawings; however, such connections developed by TSC are only to accommodate fabricating shop equipment and procedures. Responsibility for design of the structure, including design of connections, shall remain with the Architect and Engineer of record. TSC and its detailers, not being designers of steel, shall have no final design responsibilities whatsoever.

ALL ERRORS IN FABRICATION MUST BE REPORTED TO THE FABRICATOR WITHIN 26 HOURS FOR DECISION AS TO THE BEST METHOD OF CORRECTION. BACK CHARGES WILL NOT BE ACCEPTED UNLESS OUR CONSENT IS GIVEN IN ADVANCE IN WRITING.

NO.	DIA.	LG.	TYPE	WASHER	L	H	F	B
6	1/2	2 1/2	LAG SCREWS					
2	1/2	0-4	HILTI KWIK BOLT III					

FIELD BOLTS SUMMARY

NOTE:
 ALL WELDED JOINTS ON GALVANIZED PIECES TO BE SEALED