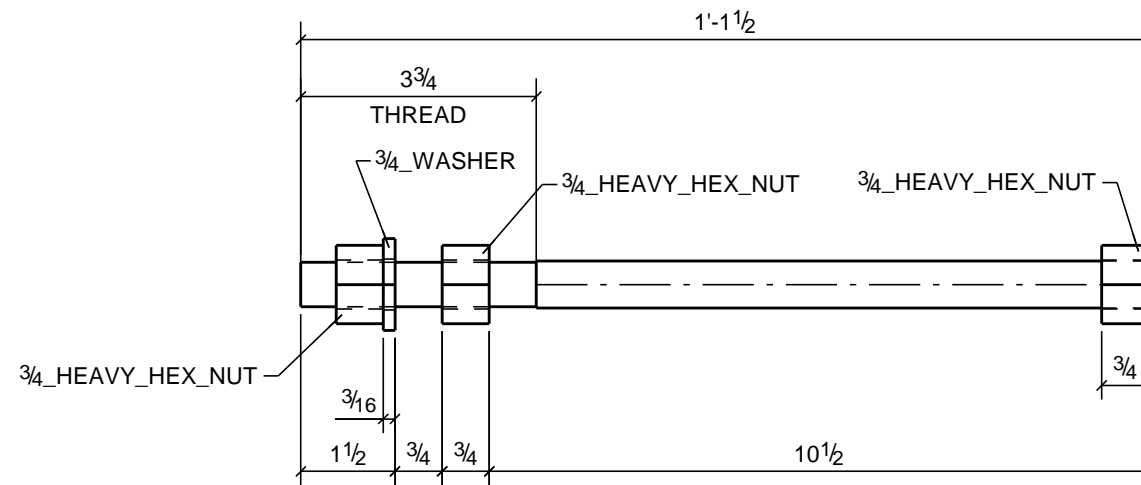


MATERIAL LIST

NOTES:	MARK	#PCS.	MATERIAL	LENGTH	WEIGHT
SQ-2	AB103	4	ANCHOR RODS		
Red Oxide PrimeF1554-36	AB103	4	ROD3/4"	1'-1 1/2"	6
		12	3/4_HEAVY_HEX_NUT		2
		4	3/4_WASHER		0
TOTAL WEIGHT THIS DRAWING					6



SIoux CITY FOUNDRY CO.
 801 DIVISION STREET SIoux CITY, IA. 51102
 712-252-4181 800-831-0874
 (FAX) 712-252-4197
 YOUR FULL SERVICE STEEL COMPANY
www.siouxcityfoundry.com

PROJECT: South Dakota State Universi

CONTRACTOR: Clark Drew Construct

SHOP NOTES:

1. MATERIAL: A36 U/NOTED
2. HOLES: 13/16 U/NOTED
3. ALL HOLES NOTED S.C. MUST BE DEBURRED, OTHERWISE BURRS OF 1/16 OR LESS ARE ALLOWED
4. ELECTRODES: E70XX
5. ALL GAS RE-ENTRANT COPIES OR CUTS ARE TO HAVE A MINIMUM RADIUS
6. SURFACE PREP: SSPC-SP6 U/NOTED
7. PAINT: Red Oxide Primer
8. DRY MIL TH'K 2 1/2 MILS U/NOTED
9. PAINT OPEN HOLES U/NOTED S.C.
10. TOLERANCES: AISC U/NOTED
11. ALL BOLTED CONNECTIONS A325N U/NOTED
12. ALL SHOP BOLTS SHALL BE TIGHTENED WITH A WRENCH, BUT NOT TORQUED

Revisions:	
Description	Date:
0 For Fabrication	02/13/19
A For Approval	12/07/18
FIELD BOLTS:	

DRAWN BY: ssh
DATE: 12/06/2018

CHECKED BY: AMT
DATE: 12/07/2018

S.O.
1238874

SHEET NO.
AB103

REV.
0

4 - ANCHOR RODS - AB103