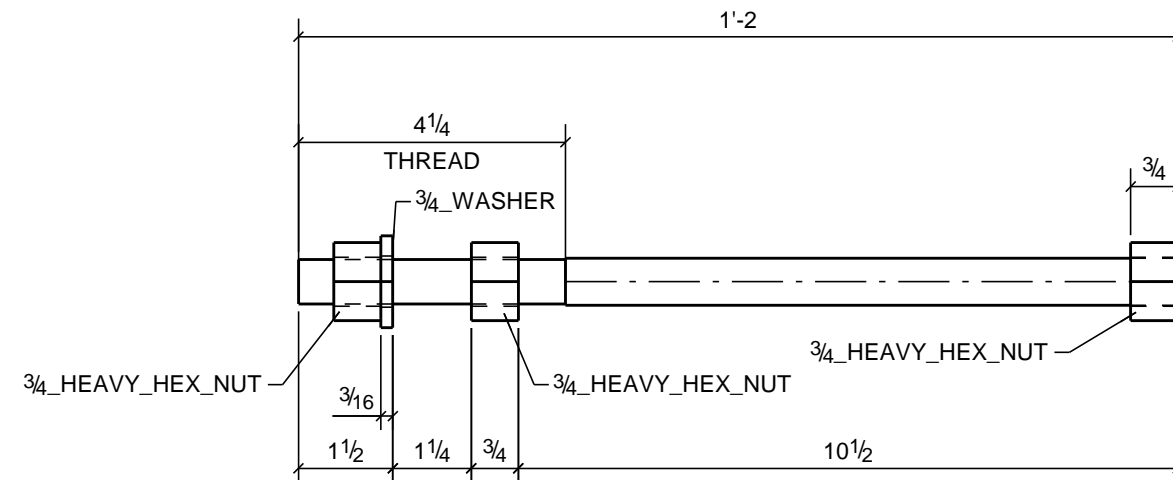


# MATERIAL LIST

NOTES:	MARK	#PCS.	MATERIAL	LENGTH	WEIGHT
SQ-2	AB102	8	ANCHOR RODS		
Red Oxide Prime F1554-36	AB102	8	ROD 3/4"	1'-2"	12
		24	3/4_HEAVY_HEX_NUT		4
		8	3/4_WASHER		1
TOTAL WEIGHT THIS DRAWING					12



## 8 - ANCHOR RODS - AB102

**SIoux CITY FOUNDRY CO.**  
 801 DIVISION STREET SIoux CITY, IA. 51102  
 712-252-4181 800-831-0874  
 (FAX) 712-252-4197  
 YOUR FULL SERVICE STEEL COMPANY  
[www.siouxcityfoundry.com](http://www.siouxcityfoundry.com)

PROJECT: South Dakota State Universi	CONTRACTOR: Clark Drew Construct																
<b>SHOP NOTES:</b> 1. MATERIAL: A36 U/NOTED 2. HOLES: 13/16 U/NOTED 3. ALL HOLES NOTED S.C. MUST BE DEBURRED, OTHERWISE BURRS OF 1/16 OR LESS ARE ALLOWED 4. ELECTRODES: E70XX 5. ALL GAS RE-ENTRANT COPIES OR CUTS ARE TO HAVE A MINIMUM RADIUS 6. SURFACE PREP: SSPC-SP6 U/NOTED 7. PAINT: Red Oxide Primer 8. DRY MIL TH'K 2 1/2 MILS U/NOTED 9. PAINT OPEN HOLES U/NOTED S.C. 10. TOLERANCES: AISC U/NOTED 11. ALL BOLTED CONNECTIONS A325N U/NOTED 12. ALL SHOP BOLTS SHALL BE TIGHTENED WITH A WRENCH, BUT NOT TORQUED	<table border="1" style="width: 100%; border-collapse: collapse;"> <thead> <tr> <th colspan="2">Revisions:</th> </tr> <tr> <th>Description</th> <th>Date:</th> </tr> </thead> <tbody> <tr> <td>0 For Fabrication</td> <td>02/13/19</td> </tr> <tr> <td>B For Re-Approval</td> <td>12/04/18</td> </tr> <tr> <td>A For Approval</td> <td>11/30/18</td> </tr> </tbody> </table>	Revisions:		Description	Date:	0 For Fabrication	02/13/19	B For Re-Approval	12/04/18	A For Approval	11/30/18						
	Revisions:																
Description	Date:																
0 For Fabrication	02/13/19																
B For Re-Approval	12/04/18																
A For Approval	11/30/18																
<table border="1" style="width: 100%; border-collapse: collapse;"> <thead> <tr> <th colspan="2">FIELD BOLTS:</th> </tr> </thead> <tbody> <tr><td> </td><td> </td></tr> <tr><td> </td><td> </td></tr> <tr><td> </td><td> </td></tr> <tr><td> </td><td> </td></tr> <tr><td> </td><td> </td></tr> <tr><td> </td><td> </td></tr> <tr><td> </td><td> </td></tr> </tbody> </table>	FIELD BOLTS:																DRAWN BY: SSH DATE: 11/30/2018 CHECKED BY: AMT DATE: 12/04/2018 S.O. 1238874 SHEET NO. AB102 REV. 0
FIELD BOLTS:																	

Tekla structures